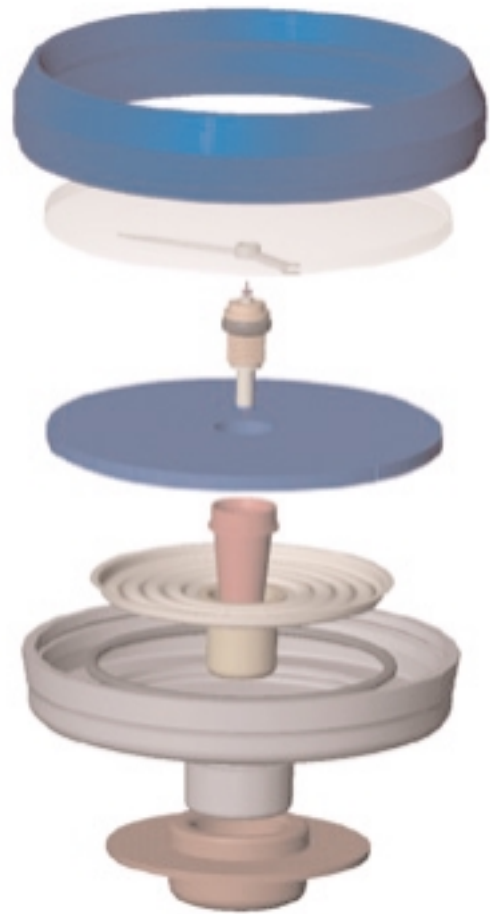


trim here

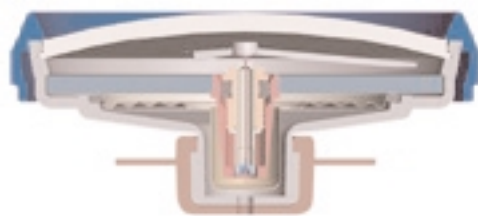


---

### How DuraShock Technology Works

In traditional aneroid sphygmomanometer design, several delicate gears and springs convert and amplify vertical movement of the pinion to rotational movement to turn the pointer. The DuraShock gear-free design uses a single helix spring to directly convert the vertical movement of the pinion to rotation of the pointer without the use of a multi-step gear arrangement.

---



By creating a gear-free design, the Welch Allyn Durashock has fewer moving parts providing a gauge which is shock resistant and lighter than traditional gauges. Until now, a dropped sphygmomanometer required recalibration or replacement. The DuraShock can fall 76 cm onto a hard surface and still remain accurate. It is the only gauge capable of meeting the AAMI\* Shock Resistant specification.

\* Association for the Advancement of Medical Instrumentation

## Specifications and Standards

The Welch Allyn DuraShock integrated aneroid sphygmomanometer is accurate to  $\pm 3$  mm Hg and conforms to applicable sections of the following standards for aneroid sphygmomanometers:

- American National Standard ANSI/AAMI SP9-1994, Non-automated sphygmomanometers
- European Standard EN 1060-1: 1996, Non-invasive sphygmomanometers, Part 1: General Requirements
- European Standard EN 1060-2: 1996, Part 2: Supplementary requirements for mechanical sphygmomanometers (excluding section 7.4.3 for pointer thickness)
- INMETRO Technical Metrological Regulation Number 24 of February 26, 1996 (excluding Section 5.4 for pointer thickness)

This product will maintain the safety and performance characteristics specified at temperatures ranging from 0°C to 46°C at a relative humidity level not to exceed 85%.

### Welch Allyn Gold Line

A premium line of quality sphygmomanometers incorporating DuraShock technology

#### Model DS66

Hand Gauge, trigger valve, single tube, 50 mm dial face

DS66-01-300	Manometer only
DS66-01-189	Manometer with adult durable one-piece velcro cuff and zipper case
DS66-01-189CB	Manometer with adult durable two-piece velcro cuff and bladder and zipper case
10-50-027	Zipper carrying case

#### Model DS56

Hand Gauge, thumbscrew valve, single tube, 50 mm dial face

DS56-01-300	Manometer only
DS56-01-189	Manometer with adult durable one-piece velcro cuff and zipper case
DS56-01-189CB	Manometer with adult durable two-piece velcro cuff and bladder and zipper case
10-50-000	Zipper carrying case

Hand Gauge, thumbscrew valve, double tube, 50 mm dial face

DS56-02-300	Manometer only
DS56-02-189	Manometer with adult durable one-piece velcro cuff and zipper case
DS56-02-189CB	Manometer with adult durable two-piece velcro cuff and bladder and zipper case
10-50-000	Zipper carrying case

### Welch Allyn Silver Line

A deluxe line of quality sphygmomanometers incorporating DuraShock technology

#### Model DS65

Hand Gauge, trigger valve, single tube, 50 mm dial face

DS65-01-300	Manometer only
DS65-01-189	Manometer with adult durable one-piece velcro cuff and zipper case
DS65-01-189CB	Manometer with adult durable two-piece velcro cuff and bladder and zipper case
10-50-027	Zipper carrying case

#### Model DS55

Hand Gauge, thumbscrew valve, single tube, 50 mm dial face

DS55-01-300	Manometer only, chrome highlights
DS55-41-300	Same as above with red highlights
DS55-21-300	Same as above with blue highlights
DS55-61-300	Same as above with yellow highlights
DS55-01-189	Manometer with chrome highlights, adult durable one-piece velcro cuff and zipper case
DS55-01-189CB	Manometer with chrome highlights, adult durable two-piece velcro cuff and bladder and zipper case
DS55-41-149	Same as above with red highlights
DS55-21-129	Same as above with blue highlights
DS55-61-169	Same as above with yellow highlights
10-50-000	Zipper carrying case

Hand Gauge, thumbscrew valve, double tube, 50 mm dial face

DS55-02-300	Manometer only, chrome highlights
DS55-02-189	Manometer with adult durable one-piece velcro cuff and zipper case
DS55-02-189CB	Manometer with adult durable two-piece velcro cuff and bladder and zipper case
10-50-000	Zipper carrying case

#### Model DS45

Integrated Gauge (cuff mounted), 50 mm dial face

DS45	Manometer only
DS45-11	Manometer with adult durable one-piece velcro cuff
DS45-11CB	Manometer with adult durable two-piece velcro cuff and bladder
10-50-000	Zipper carrying case

### Welch Allyn Bronze Line

A line of quality sphygmomanometers incorporating DuraShock technology

#### Model DS54

Hand Gauge, thumbscrew valve, single tube, 50 mm dial face

DS54-01-300	Manometer only
DS54-01-189	Manometer with adult durable one-piece velcro cuff and zipper case
DS54-01-189CB	Manometer with adult durable two-piece velcro cuff and bladder and zipper case
10-50-000	Zipper carrying case

Hand Gauge, thumbscrew valve, double tube, 50 mm dial face

DS54-02-300	Manometer only
DS54-02-189	Manometer with adult durable one-piece velcro cuff and zipper case
DS54-02-189CB	Manometer with adult durable two-piece velcro cuff and bladder and zipper case

#### Model DS54 Home

Hand Gauge for self measurement with stethoscope, thumbscrew valve, single tube, 50 mm dial face

DS54-01-300	Manometer only
DS54-01-187	Manometer with adult durable two-piece velcro cuff and bladder with integrated stethoscope and zipper case

#### Model DS44

Integrated Gauge (cuff mounted), 50 mm dial face

DS44	Manometer only
DS44-11	Manometer with adult durable one-piece velcro cuff
DS44-11CB	Manometer with adult durable two-piece velcro cuff and bladder
10-50-000	Zipper carrying case

#### Welch Allyn (Headquarters)

Tel: +1 315 685 4560 Or 800 535 6663  
Fax: +1 315 685 0054

#### Welch Allyn Ireland (European Customer Service)

Tel: +353 46 906 7790  
Fax: +353 46 906 7754

#### Welch Allyn Canada

Tel: +1 905 890 0004  
Fax: +1 905 890 0008

#### Welch Allyn U.K.

Tel: +44 (0) 207 365 6780  
Fax: +44 (0) 207 365 9694

#### Welch Allyn Italy

Tel: +39 (0) 2 6699 291  
Fax: +39 (0) 2 6671 3599

#### Welch Allyn Australia

Tel: +61 2 9638 3000  
Fax: +61 2 9638 3500

#### Welch Allyn China

Tel: +86 21 6327 9631  
Fax: +86 21 6327 9632

#### Welch Allyn Japan

Tel: +81 33 219 0071  
Fax: +81 33 219 0074

#### Welch Allyn Singapore

Tel: +65 291 0882  
Fax: +65 291 5780

#### Welch Allyn South Africa

Tel: +27 11 777 7509  
Fax: +27 11 777 7510

#### Welch Allyn Germany

Tel: +49 (0) 7477 9271 0  
Fax: +49 (0) 7477 9271 90

#### Welch Allyn France

Tel: +33 (0) 1 60 09 3366  
Fax: +33 (0) 1 60 09 6797

#### Welch Allyn Spain

Tel: +34 91 386 3047  
Fax: +34 91 386 1029

#### Welch Allyn Sverige

Tel: +46 (0) 42 33 02 20  
Fax: +46 (0) 42 33 32 10

#### Welch Allyn Cardio Control BV

Tel: +31 15 750 5000  
Fax: +31 15 750 5050

# Welch Allyn® DuraShock™ Technology

More Accurate  
Blood Pressure  
Readings with Lower  
Lifetime Costs.



it's precise



it's robust



it's light



it's easy



# A complete blood pressure product line incorporating Welch Allyn DuraShock Technology.

Trigger Aneroids  
the sixty series



## DS66

DuraShock Model DS66 is one of two premium models in the new Welch Allyn product range. In addition, the DS66 features a smooth, trigger-style air release valve and ergonomic design with soft plastic inserts for added comfort.

## Gold Line

All products in the Gold product range incorporate the following product features:

- Jewel movement for long life.
- Laser-engraved dial for accuracy.
- Shock resistant for accuracy and lower cost over time.
- 15-Year calibration warranty.
- Premium aesthetics.

## Gold Line

## Silver Line

All products in the Silver product range incorporate the following product features:

- Laser-engraved dial for accuracy.
- Shock resistant for accuracy and lower cost over time.
- 10-Year calibration warranty.
- Premium aesthetics.

## Silver Line



## DS65

In addition, the DS65 features a smooth, trigger-style air release valve and identification labels that can be customized.

## Bronze Line

All products in the Bronze product range incorporate the following product features:

- Shock resistant for accuracy and lower cost over time.
- 5-Year calibration warranty.

## Bronze Line

Welch Allyn's complete line of aneroid sphygmomanometers incorporating shock-resistant DuraShock technology offers practical benefits compared to traditional aneroid sphygmomanometers. This is especially beneficial in busy medical environments where equipment needs to be as robust as possible.

With DuraShock Technology, Welch Allyn B.P. gauges:

- Remain in calibration longer than traditional aneroid B.P. gauges, providing you with more accurate readings.
- Do not need to be replaced as often as traditional aneroid B.P. gauges, giving you a lower lifetime cost.
- Have the only gauge capable of passing AAMI's shock-resistant specification of surviving a 76 cm drop onto a hard surface and remaining in calibration.

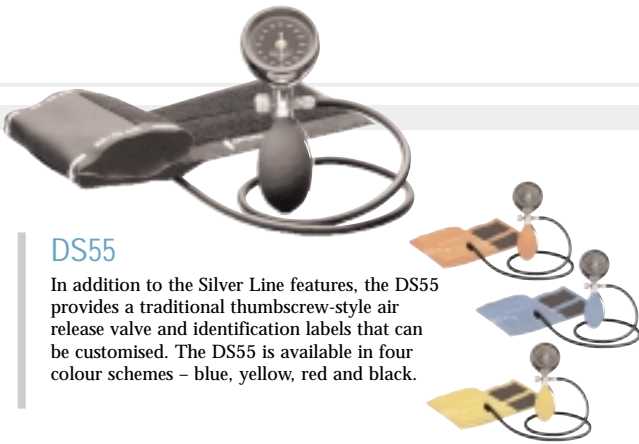
## Hand Aneroids the fifty series



### DS56

DuraShock Model DS56 is one of two premium models in the new Welch Allyn product range. In addition to the Gold Line features, the DS56 provides a traditional thumbscrew-style air release valve with soft plastic cover and bumper around the dial for comfort and added protection.

## Integrated Aneroids the forty series



### DS55

In addition to the Silver Line features, the DS55 provides a traditional thumbscrew-style air release valve and identification labels that can be customised. The DS55 is available in four colour schemes – blue, yellow, red and black.



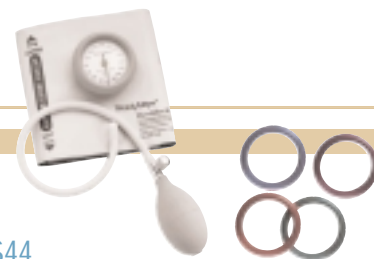
### DS45

In addition to the Silver Line features, the DS45 provides a unique integrated, cuff-mounted design that is compact and lightweight for ease of use. The gauge rotates 360° for easy viewing from any angle. A soft plastic bumper around the dial provides added protection and a large inflation bulb with a high quality air-release valve make it easy to use.



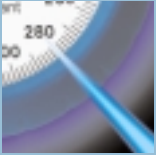
### DS54

In addition to the Bronze Line features, the DS54 provides a traditional thumbscrew-style air release valve.



### DS44

In addition to the Bronze Line features, the DS44 has a unique integrated, cuff-mounted design that is compact and lightweight. The gauge rotates 360° for easy viewing from any angle. A soft plastic bumper around the dial provides added protection. The DS44 is available with four optional colour bumpers – blue, purple, red, and green.



## Laser Engraved Dial Face

All Welch Allyn Silver and Gold Line sphygmomanometers feature a gauge that is calibrated by a computer and laser engraved with a custom-made dial face that accurately reflects the readings of the DuraShock aneroid movement inside. This proprietary production process is unique to Welch Allyn and provides you with a sphygmomanometer of unmatched accuracy.

← trim here



## Award winning technology

Patented DuraShock Technology is the first major innovation in aneroid sphygmomanometer technology in nearly 100 years. Consequently, DuraShock has already received two prestigious awards since being introduced in 2001.

DuraShock received a silver medal in the 2002 Medical Design Excellence Awards competition. The contest is the only awards program devoted exclusively to recognising contributions and advances in the design of medical products. MDEA winning products excel in the areas of product innovation, design and engineering excellence, end-user and patient benefits, and cost-effectiveness in manufacturing and healthcare delivery.

Also in 2002, DuraShock was listed as a winner at the 40th annual R&D 100 Awards. The contest recognizes the top 100 technologically significant new products of the year in a range of industries (not just medical) and saw entries from many of the most prestigious companies, research organisations, and universities in the world.

The *Chicago Tribune* has called the R&D 100 Awards “The Oscars of Invention” and others have referred to the awards as “the Nobel Prizes of applied research.” The sole criterion for selection is demonstrable “technological significance” compared with competing products and technologies.

Among the R&D 100 Awards winners of years past are breakthroughs like Polacolor film, the digital wristwatch, antilock brakes, the automated teller machine, the liquid crystal display, the halogen lamp, the fax machine, the touch-sensitive screen, the Kodak Photo CD, the Nicoderm anti-smoking patch, Taxol anti-cancer drug, and high-definition television.

It is an honor to have DuraShock technology recognized by two such respected organizations.